

Manual



g - file

Index of Contents

Safety Instructions	3
Application	7
Handling Instructions	8
Troubleshooting	9
Exploded Drawing	10
Technical Data	11

Safety Instructions



Read this instruction manual in its entirety before you start operating the unit.



This appliance can be used by children aged from 8 years and above and persons with reduced physical, sensory or mental capabilities or lack of experience and knowledge if they have been given supervision or instruction concerning use of the appliance in a safe way and understand the hazards involved.



Children should be supervised not to play with the appliance.



The installation of the working area has to correspond to the relevant regulations.



Only switch on the unit, if the handpiece rests secured in the handpiece holder, or if you hold it safely in your hand.



Prevent any liquids from entering into the control unit, since this could damage the electronic elements. Clean the outside of the box only with a damped cloth. Make sure, that you have unplugged the unit before.



Prevent your hair from wrapping itself around moving parts. If applicable, wear a hair net.

Safety Instructions



For safety reasons wear goggles during the treatment.



When working with materials, which might create dust or moisture, use a drilling unit with suction or spray technique. Wear a nose and mouth protection. Always follow the safety instructions, provided by the manufacturer of the materials being formed and used.



Switch off the unit immediately if

- the bur comes off during the treatment itself,
- the motor blocks during the treatment.



Turn on the unit only when you hold the handpiece safely in your hand or if it is placed in the handpiece holder. Ensure that the patient's foot and the handpiece are held firmly in place during the operation.



To prevent injury, work with extreme caution on the foot of the patient, and use only light pressure.



To ensure that the bur/tool sits firmly in the chuck, do not work with tools which

- have an oily shaft,
- are worn,
- are bent.



For safety reasons do not change the tool while the motor is running.

Safety Instructions



Turn off the unit after work.



Never clean the handpiece while motor is running.



Before using the equipment, make sure that

- the tool can be pushed far enough into the chuck (test this with a dipstick and clean the handpiece, if necessary),
- the inserted tool sits properly in the chuck and will not cant/jam while clamping it,
- the tool is approved for using it at the max speed (see manufacturer's instructions), or
- only use the speed required by the instrument,
- the tool is absolutely dry.



After each use and before each new customer:

- The tools are to be cleaned, disinfected and sterilized. Caution! Handpiece and motor may not be sterilized.
- All surfaces of the handpiece are disinfected. Take care that no liquids enter the handpiece.



Always follow the operating instructions. Do not carry out any repairs, modifications or maintenance work yourself. This is only to be accomplished by an authorized specialist. The mains cable may also only be changed by the

Safety Instructions

manufacturer, or an authorized specialist. Never remove the housing, especially not while the equipment is plugged into the socket, since some components are under electric voltage. Any unauthorized or improper handling (e.g. trying to repair the unit) of the equipment will immediately nullify the guarantee/warranty, and any other liabilities of the manufacturer.

Application

Please read through the instructions carefully before using the unit and carefully note the safety advice. Always keep this manual accessible to any users of the drill.

Area of Application

The control unit can be set up in a cabinet, or can be used as a portable unit (e.g., in a carry case). It is suitable for the following scopes: foot care / manicure (milling, trimming and polishing). Attention: Additional spray or suction might have to be in operation during foot care in your country.

Installation Site

The installation of the workroom must correspond to any regulations according to your country laws. Set up the control unit, so that the ventilation slits are not covered or blocked, and the exhaust air can escape well. The unit may only be used in closed rooms.

Clamping the Bur/Tool

Hold the handpiece with one hand at the A area. Turn with your other hand ring B clockwise until it snaps in. Now the clamp is open. Insert the bur all the way to the stop. Turn ring B counter clockwise until it snaps in.



Check that the bur is clamped correctly and cannot be pulled out. You may never turn on the unit while the chuck is open. This may

cause damages at the motor and the electronic.



For security reasons, only change the tool if the handpiece is turned off.

Adjusting the Speed

Switch on the unit by turning the button clockwise from position OFF to MIN.



The handpiece only starts at minimum speed. By turning the button more in a clockwise direction, you will raise the speed.

Cleaning & Disinfection



After every treatment please carry out the following steps:

Remove the rotating tool (e.g. bur, capper etc.) first. Then handle the cleaning of the tool according to the instructions of its manufacturer.

Remove tissue remains by wiping off the unit with a mildly moistened paper cloth. Afterwards clean all surfaces with disinfection cloth (e.g. MikroZid AF Tücher of Schülke and Mayr).

The charging unit is only to be cleaned with a dry cloth.

Handling Instructions



Never put the handpiece into any kind of liquid, and never oil or grease the handpiece. Clean its surface with a damped cloth. Pay attention, that no moisture or liquid enters the handpiece.



Never put any wet burs or instruments into the handpiece. Its moisture could damage the interior parts of the handpiece.



Any materials used by hadewe prevent a formation of rust. In cases in which a rust infestation was found within the handpiece, thorough inspections and examinations always have proved, that the rust had a foreign origin (which was usually caused by the tools used in these circumstances). Even in high-grade steel instruments of well-known manufacturers, formation of rust can appear, e.g., through wrong treatment with chemical cleaning and disinfection liquids. This extraneous rust affects internal parts of the handpiece in form of rust bloom and causes pitting. Therefore, when you not working with the handpiece, always remove the bur/tool from it.



Always make sure that you do not let the handpiece fall down or exposes it to any shocks. The ball bearings and the motor could be damaged by this. Only work with tools, which are flawless. Do not work with tools which

- are bent or out of balance,
- whose shaft is worn out or
- are rusty.



Working with faulty tools will cause a stronger vibration of the handpiece. A damage or even devastation of the ball bearings, clamping technique or motor could be the consequence.



Working with high pressure will not improve the outcome of your work, since the motor will even be slowed down. A second disadvantage is the stronger impact on the ball bearings and the motor, which will shorten their life span in the long run.

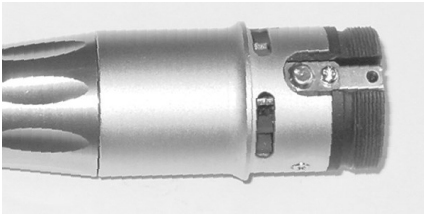
Troubleshooting

When the motor does not rotate or stutters...

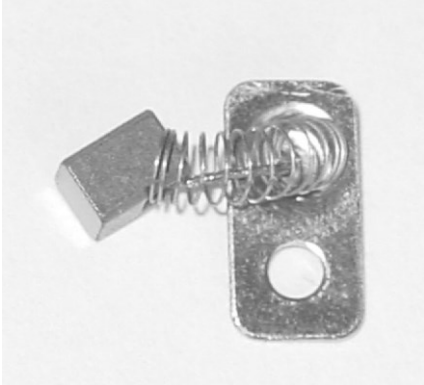
Possible reason: worn carbon brushes

The operations described below should only be performed by skilled persons.

Turn of the endcap of the motor. Pull off the cable. Disengage the screw:



Remove the carbon brush:



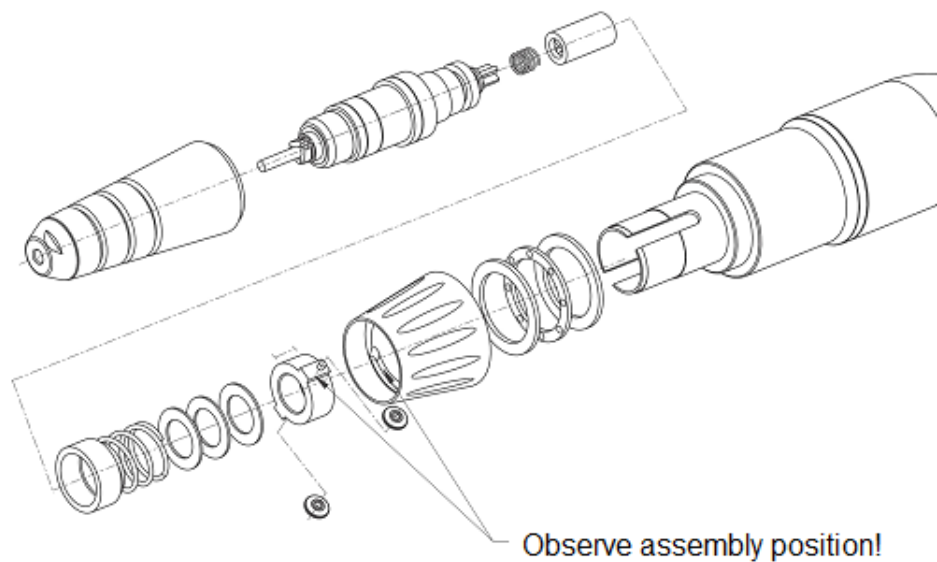
Put in a new carbon brush. Check the position of the spring on the brush. It must be in the middle of the brush. The carbon brush is a wearing part and has to be exchanged when worn. You will find a pair of carbon brushes enclosed. Check the second brush as well.

When the handpiece becomes warm...

Should the handpiece become warm or make loud running noises, probably the ball bearings in the handpiece front part are worn. In this case we recommend to send us the handpiece for service.

Exploded Drawing

Explosive Drawing for Service/Repair Shops



Technical Data

art. 6231, 6232, 6233, 6234

Handpiece

weight: 160 g
length of handpiece: 126 mm
handpiece Ø: 13 mm
motor Ø: 27 mm
speed: 4.000 – 20.000 rpm

Steering unit

weight: 0,9 kg
dimensions: W114 x H86 x D183mm
input: 230 V ~, 50 Hz
output: 50 W
fuse primary:
F1: 0,315A time delayed safety
fuse
fuse secondary: thermal fuse
protection class II

Declaration of Conformity

We declare under our sole responsibility, that the products g-file 6231, 6232, 6233 and 6234 to which this declaration relates, are conform to the following standards or normative documents:

2014/30/EU directive EMC
2014/35/EU low voltage directive

hadewe GmbH – Grambartstraße 10
30165 Hannover – Germany

Symbols



Caution!



Important note!



Follow instructions for use!



protection class II



direct current



safety fuse



alternating current



date of manufacture,
name and address
of the manufacturer

Disposal

For disposal of this unit, please contact the site, where you bought this hadewe product.

Safety Check

A safety check must be done in compliance with the regulations of the country where the device is used. The inspection interval is once a year.

hadewe

hadewe GmbH
Grambartstraße 10
30165 Hannover
Germany
info@hadewe.de
www.hadewe.de